

**QUICKTRONIC® PROFESSIONAL T8**  
**ECG for T8/Ø26mm fluorescent lamps**  
**QTP8 1x18**  
**QTP8 2x18**

Technical information

Edition: September 2006

Subject to change

**Features:**

- 50,000 hours lifetime with 10% max. failure rate at **tc = 75°C max.**
- **Up to 100,000 hours lifetime for t = 65°C tc-point**
- Reliable lamp ignition between -25°C ...+55°C
- Lamp start with optimised filament preheating within 2 sec.
- Suitable for luminaires of PC I + II
- Constant light output for  $U_N = 198V \dots 264V$
- CELMA energy classification EEI = A2
- Automatic safety shut down at lamp failure
- Automatic restart after lamp replacement
- Suitable for emergency installations (DC operation)



**Technical data:**

Reference	QTP8 1x18	QTP8 2x18
Lamp :	L 18W	2 x L 18W
HF lamp wattage [W]	16	2x16
System wattage [W]	18	35
Line current [A]	0,09	0,17
Luminous flux at 25°C [lm]	1300	2x1300
Max. cable diameter für IDC contact [mm <sup>2</sup> ]	„s <sup>1)</sup> “: 0,5; „s-f <sup>2)</sup> “: 0,75	
Max. cable diameter for push-in contact [mm <sup>2</sup> ]	„s <sup>1)</sup> “: 0.5...1.0*	
Starting time:	t < 2 sec.	
Line voltage:	230-240 V	
Voltage range (AC):	198-264 V	
Voltage range (DC)	154-276 V; min. 198 V for lamp ignition	
Line frequency:	50-60 Hz	
Operating frequency:	45-60 kHz	
Inrush current	$I_p = 14 A; T_H = 140 \mu s$	$I_p = 17 A; T_H = 155 \mu s$
Max. number of ECG, circuit breaker 10A, Char. C	36	25
Max. number of ECG, circuit breaker 16A Char.B / Char. C	59 / 101	41 / 69
Electrical strength:	300 V → permanent	
Power factor:	$\lambda = 0.96$	$\lambda = 0.97$
Ambient temperature t <sub>a</sub> :	-25 °C to +55 °C	
Measuring point temperature t <sub>c</sub> :	max. +75 °C	
U-OUT	380 V	380 V
Design (l x w x h):	360 x 30 x 30 mm	423 x 30 x 30 mm
Distance mounting holes:	350 mm	415 mm
Weight:	270g	415g
Safety:	acc. to EN 61347-2-3 / IEC 61347-2-3	
Radio interference:	acc. to EN 55015 / CISPR 15	
Harmonic content:	acc. to EN 61000-3-2 / IEC 61000-3-2	
Immunity:	acc. to EN 61547 / IEC 61547	
Packaging unit:	20 pieces	
Approval marks:		

<sup>1)</sup>„s“ = stranded wire

<sup>2)</sup>„s-f“ = stranded-flexible wire

**QUICKTRONIC® PROFESSIONAL T8**  
**ECG for T8/Ø26mm fluorescent lamps**  
**QTP8 1x18**  
**QTP8 2x18**

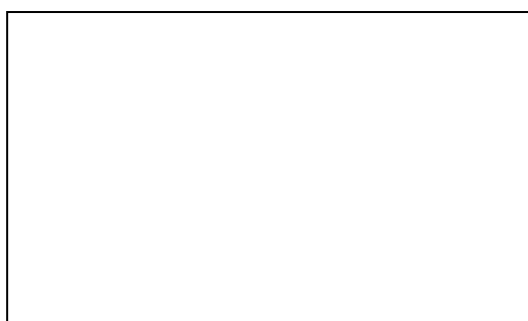
Technical information

Edition: September 2006

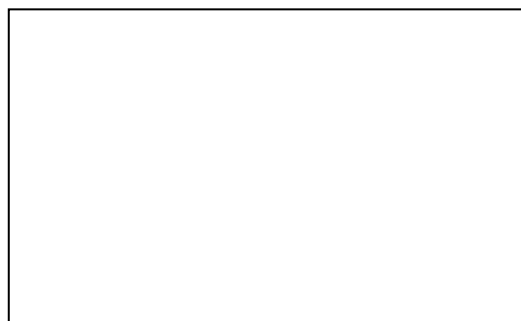
Subject to change

**Product:**

**QTP8 1x18**



**QTP8 2x18**

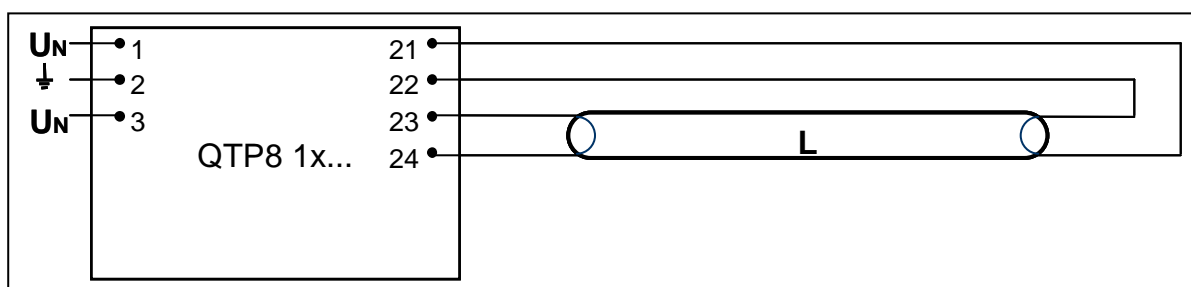


**Product number:**

Reference	EAN 10	EAN 40
QTP8 1x18	4008321 131584	4008321 131591
QTP8 2x18	4008321 131607	4008321 131614

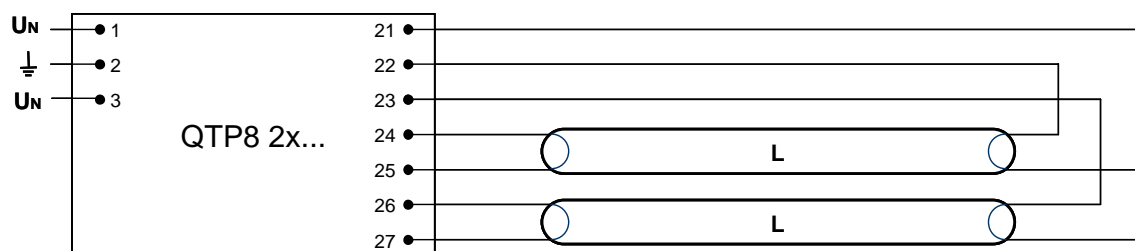
**Lamp wiring:**

**QTP8 1x18**



Max. cable length between ECG and lamp: 2.0 m (PIN 21; 22); 1.5 m (PIN 26, 27)

**QTP8 2x18**



Max. cable length between ECG and lamp: 3.0 m (PIN 21, 22, 23); 1.5 m (PIN 24, 25, 26, 27)