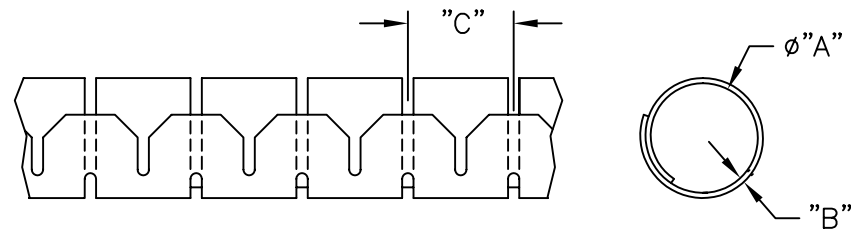


PART NO.	DIA. "A" REF.	MAX. BUNDLE DIA.	WALL "B" REF.	"C" REF.	STANDARD LENGTHS	INSTALLATION TOOL NO.	MATERIAL
SHR-08-6NB	.31 (8)	.39 (10)	.032 (0.8)	.39 (10)	328 ft. (100 m)	CAT-08-PP	NYLON RMS-85
SHR-15-6NB	.59 (15)	.63 (16)	.032 (0.8)	.55 (14)	164 ft. (50 m)	CAT-15-PP	
SHR-20-6NB	.79 (20)	.90 (23)	.035 (0.9)	.67 (17)	98 ft. (30 m)	CAT-20-PP	
SHR-25-6NB	.98 (25)	.98 (25)	.039 (1.0)	.79 (20)	65 ft. (20 m)	CAT-25-PP	
SHR-32-6NB	1.25 (32)	1.25 (32)	.050 (1.3)	.980 (24.9)	49 ft. (15 m)	CAT-32-PP	
SHR-08-PPB	.31 (8)	.39 (10)	.032 (0.8)	.39 (10)	328 ft. (100 m)	CAT-08-PP	POLYPROPYLENE RMS-94
SHR-15-PPB	.59 (15)	.63 (16)	.032 (0.8)	.55 (14)	164 ft. (50 m)	CAT-15-PP	
SHR-20-PPB	.79 (20)	.90 (23)	.035 (0.9)	.67 (17)	98 ft. (30 m)	CAT-20-PP	
SHR-25-PPB	.98 (25)	.98 (25)	.039 (1.0)	.79 (20)	65 ft. (20 m)	CAT-25-PP	
SHR-32-PPB	1.25 (32)	1.25 (32)	.050 (1.3)	.980 (24.9)	49 ft. (15 m)	CAT-32-PP	
SHR-08-6VOB	.31 (8)	.39 (10)	.032 (0.8)	.39 (10)	328 ft. (100 m)	CAT-08-PP	FLAME RETARDANT NYLON UL94 V-0 RMS-95,
SHR-15-6VOB	.59 (15)	.63 (16)	.032 (0.8)	.55 (14)	164 ft. (50 m)	CAT-15-PP	
SHR-20-6VOB	.79 (20)	.90 (23)	.035 (0.9)	.67 (17)	98 ft. (30 m)	CAT-20-PP	
SHR-25-6VOB	.98 (25)	.98 (25)	.039 (1.0)	.79 (20)	65 ft. (20 m)	CAT-25-PP	
SHR-32-6VOB	1.25 (32)	1.25 (32)	.050 (1.3)	.980 (24.9)	49 ft. (15 m)	CAT-32-PP	

1. MATERIAL: HEAT STABILIZED NYLON 6 (RMS-157).  
AVAILABLE BY SPECIAL ORDER ONLY.  
TO ORDER, USE PART NO. SHR-XX-HTNB
2. STANDARD COLOR: BLACK.  
OTHER COLORS AVAILABLE BY SPECIAL ORDER.



M			TITLE: SLIT HARNESS WRAP			DWG IN IN(mm)		FINAL	
L	SEE ECN #876 FOR CHANGES	SM 11.03.04	TOLERANCES UNLESS NOTED .XX=±.020 .XXX=±.015 FRAC=1/64 ANG=1°	FILE #	SHR	DWN: J.B.	APP:	PART # SEE CHART	PRINT TYPE CA
K	SEE ECN #857 FOR CHANGES	SM 09.27.04		MAT'L:	SEE NOTES	DT: 01-05-97	DT:		
J	SEE ECN #825 FOR CHANGES	SM 07.14.04		RE:	RICHCO INC	RICHCO INC. PO BOX 804238, CHICAGO, 60680 (773) 539-4060			
I	SEE ECN #619 FOR CHANGES	SM 05.01.03							
-	SEE ENGINEERING FOR REV A-H	-							
REV	DESCRIPTION	ENGR DATE							